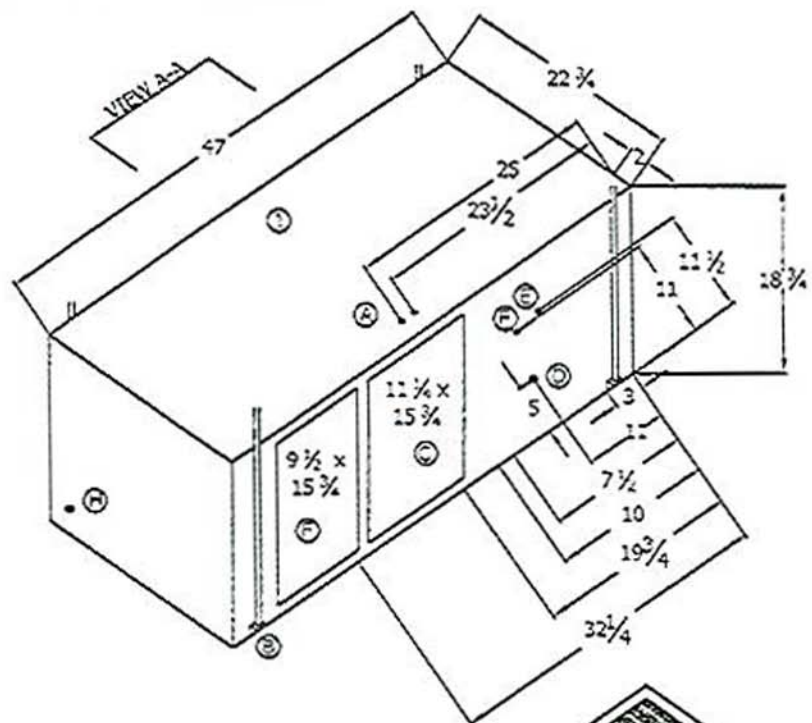
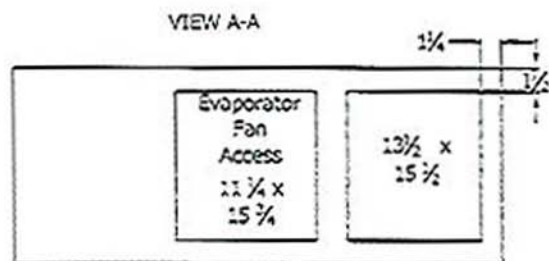


CW 1, 1 1/2, 2 TON UNITS



- A. Electrical power connections
- B. Vibration isolators & hangers
- C. Control Access Panel (Both Sides)
- D. 3/4" FPT drain connection (Both Sides)
- E. Water in (1/2 MPT)
- F. Water out (1/2 MPT)

- 1. Chilled water coil / Blower section
- 2. Optional Return / Supply grille (gloss white)

