

Bulletin
7D 9/06
Style W

QUICKSHIP FAN COIL UNITS

Horizontal and Vertical

USA COIL & AIR



P.O. Box 578
Devault, PA 19432
1-800-USA-COIL (1-800-872-2645)
FAX: (610) 296-9763
www.usacoil.com

TABLE OF CONTENTS

Section	Description	Page No.
Horizontal Fan Coils	Description, Features & Nomenclature	4-5
	Cooling Capacities, Water & DX	6
	Performance Data & Hot Water/Steam Capacities	7
	Sound Power Levels & Certification	8
	Dimensional Drawings	9-16
Vertical Fan Coils	Description, Features & Nomenclature	17-18
	Performance Data & DX Capacities	19
	Cooling Capacities, Water & DX	20
	Hot Water/Steam Capacities	21
	Sound Power Levels & Certification	22
	Dimensional Drawings	23-26
	Weights & Measures	27

TERMS AND CONDITIONS

USA Coil & Air, Inc. reserves the right to change dimensional, construction, performance or any other criteria shown in this publication without notice to its customers.

Acceptance of orders. Purchase orders are subject to acceptance and approval by USA Coil & Air, Inc. (seller). No Terms or Conditions appearing on purchase orders of other related documents that are contrary to our Standard Terms and Conditions shall be binding unless specifically agreed to beforehand by the Seller in writing.

Cancellation of orders. The Purchaser can cancel or modify an order upon written notice and Purchaser shall pay all costs (cancellation or modification) and charges as determined in an equitable way by seller.

Quotations. Any quotation in writing by USA Coil & Air, Inc. may or may not include freight charges within the quoted price(s). Regardless, all equipment is sent F.O.B. Factory and it is the Purchaser's responsibility to make claim for loss or damage with transportation (delivering) carrier.

Warranty. USA COIL & AIR, INC. WARRANTS TO THE ORIGINAL OWNER/USER OF THE USA COIL & AIR, INC. UNIT IDENTIFIED ABOVE TO BE FREE OF ORIGINAL DEFECTS IN MATERIAL OR WORKMANSHIP FOR A PERIOD OF ONE YEAR FROM THE EFFECTIVE DATE OF THIS WARRANTY.

The Warranty extends for twelve (12) months from date of start-up, but no longer than eighteen (18) months from the date of shipment. The warranty does not include the filter.

This Warranty on the units obligates USA Coil & Air, Inc. to repair or replace, free of charge, any part or parts that show evidence of being defective in material and workmanship and are deemed so defective by personnel of USA Coil & Air, Inc.. The part must be returned for replacement with the proper information as required.

USA Coil & Air, Inc. assumes no obligation for labor required to replace the defective part or parts nor the freight or postage required to return or to secure the part which shall be at the cost and expense of the Original Owner/User. Warranty does not include breakage or rupture of water tubing and/or water condenser coil when subjected to freezing temperatures.

USA Coil & Air, Inc., will replace the defective part or parts within 21 days after the return to the USA Coil & Air, Inc. of such defective part or parts provided notice of such defect was given by Original Owner/User within the Warranty period.

An optional, additional four-year protection plan on the compressor is available at modest cost at the time of original unit sale only. This obligates USA Coil & Air, Inc. to replace f.o.b. factory, a defective compressor with a comparable compressor of equal capacity free of charge. No responsibility is assumed by USA Coil & Air, Inc. for refrigerant, labor, or freight to and from factory.

THIS WARRANTY IS EXPRESSLY IN LIEU OF ALL OTHER EXPRESS WARRANTIES. ALL IMPLIED WARRANTIES, INCLUDING WARRANTIES OF MERCHANTABILITY OR FITNESS FOR ANY PARTICULAR PURPOSE ARE LIMITED IN DURATION TO ONE (1) YEAR FROM EFFECTIVE DATE OF THIS WARRANTY. USA COIL & AIR, INC. IS NOT LIABLE FOR CONSEQUENTIAL DAMAGES RESULTING FROM ANY DEFECT IN PART. THERE ARE NO OTHER OBLIGATIONS ON THE PART OF THE USA COIL & AIR, INC..

Warranty of Fitness

USA Coil & Air, Inc. does not provide a warranty of fitness since, in good faith USA Coil & Air, Inc. cannot anticipate or control the many different conditions under which the products of USA Coil & Air, Inc. may be used.

USA Coil & Air Fan/Coil Units with design flexibility unavailable in other units.

Horizontal Units with or without complete cabinets around them for use in a variety of applications. Vertical Units with many supply and return configurations.

GENERAL APPLICATIONS & USES

USA Coil & Air Units can be installed as a basic unit where you pull the air in from the space where the unit is installed. You can also install the unit as a fully ducted return unit and duct in and out. USA Coil & Air Vertical units are designed for apartment or closet applications.

Other applications include:

- Spot cooling and/or heating
- Perimeter cooling and/or heating
- Space cooling and/or heating
- Offices, schools, hospitals, rooms, residences, apartments or general use.

Special Note

USA Coil & Air Horizontal Units can be used for exposed applications. The cabinet is sufficiently attractive that there is no problem in exposing the unit. Our coil connections and drain connections come out the side of the unit however, and special care must be given to covering the piping and wiring, if that is a consideration.

HORIZONTAL FAN COIL FEATURES

Coils – 1/2" OD copper tube with aluminum fins (12 FPI) equipped with manual-air vent. Coils are 100% underwater pressure tested at 350 PSI with a 300 PSI working pressure.

Cabinet – Heavy-gauge galvanized steel with 1/2" thick, over three pound density, neoprene coated fiberglass.

Drain Pan – Galvanized and powder coated epoxy with a 1/4" thick closed-cell insulation and has primary and secondary drain connections.

Motors – All motors are 3-speed, 115V/1/60 PSC with quick-connect plug.

Blower – Easy slide-out, draw-through blower and motor assembly.

Controls – Controls and motors are factory-wired and terminated in a junction box for single-point power supply.

Air Openings – One-inch duct collar on supply-air openings.

Filter – One-inch fiberglass, throwaway filter.

Certification – UL and cJUL approved, ARI certified and 100% factory tested.

OPTIONAL FEATURES FOR 'BEST IN THE INDUSTRY' FAN/COILS.

Cabinet – Soft-white, powder-coated epoxy cabinet.

Drain Pans – Stainless steel, double-wall.

Coils – Copper fins, phenolic coated, stainless-steel end plates. All options are available on one to six rows.

Insulation – fiberglass, foil-faced, elastomeric and double-wall (solid or perforated) in 1/2" and 1" thickness.

Systems – Two or Four-pipe, Hydronic cooling/heating, Steam, Direct-expansion (DX) and/or Electric Heat.

Grilles – eliminates the need for closet doors - available in custom colors.

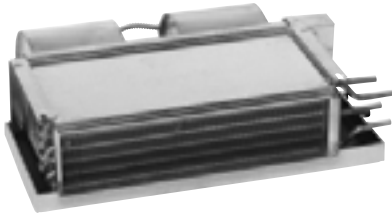
Controls – Unlimited selection of factory-mounted valves and controls.

Filters – Two-inch thick throwaway, washable.

Flow-Control Pump – For water heating applications.

Electric Strip Heat – From 1 to 9 kW

Horizontal Fan Coils from USA Coil & Air



Basic Horizontal
3/4 Ton Thru 3 Ton
Direct Drive in Water
and DX

Basic Horizontal Model (DWHB & DXHB) consists of the chassis, coil lower assembly with quick-connect plug and powder coated, epoxy drain pan with 1/4" thick closed-cell insulation with primary and secondary drain connection. Whether in hotels, motels or apartments, this series is perfectly adaptable because of its' low profile. These models have no exterior cabinet.



Deluxe Horizontal
3/4 Ton Thru 3 Ton
Direct Drive in Water
and DX

Deluxe Horizontal Model (DWHD & DXHD) is designed for horizontal, free-blow exposed ceiling mounting. Deluxe Units are built with a full cabinet manufactured of heavy-gauge cold-rolled steel, phosphate conversion-coated and finished in a soft-white, powder-coated epoxy and subjected to 500 hours salt spray test in accordance with ASTM B117. The fan coil is insulated with 1/2" thick over three-pound density fiberglass. It is adaptable for remodel situations where the addition of ductwork is limited. The Deluxe Unit is usually below ceiling and fully visible.

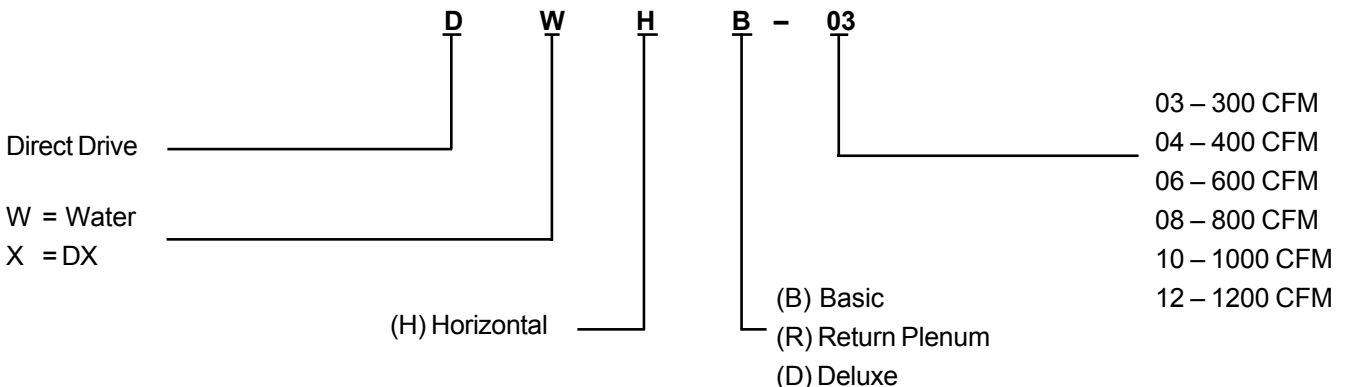


Rear Return-Air Plenum Horizontal
3/4 Ton Thru 3 Ton
Direct Drive in Water
and DX

Rear Return-Air Plenum Horizontal Model (DWHR & DXHR) is built with a heavy-gauge galvanized rear return-air plenum and insulated with 1/2" thick neoprene-coated fiberglass. It is also effective for mounting above ceilings, in closets, hallways or bathroom areas. The plenum conceals the unit's blower motor, which is easily accessible for service by removing the bottom panel.

* Also available Bottom Return. See pages 15 & 16.

NOMENCLATURE



Horizontal Fan Coils

Performance Data &
Hot Water/Steam Capacities

NOMINAL PERFORMANCE DATA - HORIZONTAL FAN COILS - AIR FLOW DATA

UNIT SIZE	STD COIL ROWS	EXTERNAL STATIC PRESSURE (INCHES H ₂ O)																	
		0.00			0.05			0.10			0.15			0.20			0.25		
		HI	MED	LO	HI	MED	LO	HI	MED	LO	HI	MED	LO	HI	MED	LO	HI	MED	LO
03	3	320	310	305	280	275	280	245	235	220	210	200	185	175	170	155	140	135	135
04	3	480	425	330	450	400	315	425	380	295	395	355	275	375	330	250	355	310	230
06	4	630	500	380	605	485	360	580	465	340	550	445	325	520	425	305	490	400	285
08	4	870	800	510	845	775	480	820	745	445	790	720	420	765	695	390	790	620	365
10	4	1030	920	510	1000	890	475	970	860	440	940	830	405	905	800	375	875	770	350
12	4	1230	1110	890	1165	1045	825	1110	980	755	1055	925	690	1000	875	620	955	835	555

NOMINAL HOT WATER/STEAM CAPACITIES - HORIZONTAL FAN COILS

HOT WATER

ENTERING CONDITIONS: 70°F DB AIR/180°F EWT									
SIZE	ROWS	CIR.	CFM	TEMPERATURE DROP 20°F					
				TOTAL BTU	GPM	WPD	APD	GPM/CIR.	TUBE VEL.
03	1	1	400	16.5	1.7	1.0	0.091	1.7	3.0
	2	2	355	25.4	2.7	0.9	0.152	1.4	2.3
04	1	1	555	23.1	2.4	2.2	0.097	2.4	4.2
	2	1	515	38.3	4.1	11.1	0.173	4.1	6.9
06	1	1	755	30.8	3.3	4.3	0.111	3.3	5.5
	2	2	705	49.7	5.3	4.0	0.199	2.6	4.5
08	1	3	1030	36.1	3.8	0.7	0.141	1.3	2.2
	2	2	965	65.0	6.9	6.6	0.255	3.5	5.9
10	1	1	1210	47.2	4.8	11.2	0.137	4.8	8.1
	2	2	1140	77.6	8.0	9.4	0.249	4.0	6.7
12	1	3	1540	54.7	5.8	1.2	0.157	1.9	3.3
	2	3	1425	93.7	9.9	4.9	0.277	3.3	5.6

STEAM

HEATING CAPACITIES - STEAM: 5 PSI						
SIZE	ROWS	CFM	ENTERING AIR 70°F			
			TOTAL BTU	LDB	#S COND	APD
03	1	415	31.0	138.3	32.3	0.130
	2	355	41.9	177.9	43.6	0.200
04	1	575	42.2	137.2	44.0	0.138
	2	525	60.1	174.7	62.6	0.237
06	1	790	55.6	134.4	57.9	0.163
	2	720	80.1	171.8	83.4	0.278
08	1	1075	70.6	130.0	73.4	0.212
	2	990	104.5	166.6	108.8	0.368
10	1	1265	83.8	130.6	87.2	0.205
	2	1165	123.8	167.2	128.9	0.356
12	1	1600	102.1	128.3	106.3	0.236
	2	1460	151.5	164.9	157.8	0.402

Symbols: LDB: Leaving dry bulb temperature in F°
 GPM: Gallons of water per minute
 WPD: Water pressure drop in feet of water
 LWB: Leaving wet bulb temperature in F°
 APD: Air pressure drop

NOMINAL CHILLED WATER CAPACITIES - HORIZONTAL FAN COILS

COOLING CAPACITIES FOR WATER TEMPERATURE RISE 10° - ENTERING AIR 80°F DB/67°F WB																	
				ENTERING WATER TEMPERATURE 40°							ENTERING WATER TEMPERATURE 45°						
SIZE	ROWS	CIR.	CFM	TOTAL BTU	SENS BTU	GPM	WPD	APD	GPM/ CIR.	TUBE VEL.	TOTAL BTU	SENS BTU	GPM	WPD	APD	GPM/ CIR.	TUBE VEL.
03	3	1	320	14.8	9.6	3.1	13.0	0.291	3.1	5.3	11.4	8.2	2.4	7.9	0.276	2.4	4.0
	4	1	295	16.8	10.5	3.5	21.6	0.342	3.5	6.0	13.2	9.0	2.8	13.6	0.330	2.8	4.7
04	3	2	480	19.6	13.2	4.1	4.3	0.346	2.1	3.5	14.8	11.4	3.1	2.5	0.319	1.6	2.6
	4	2	450	23.3	15.0	4.9	7.4	0.421	2.4	4.1	18.1	12.8	3.8	4.7	0.398	1.9	3.2
06	3	2	660	27.3	18.4	5.7	8.1	0.405	2.9	4.9	20.9	15.7	4.4	5.3	0.376	2.2	3.8
	4	3	630	30.6	19.9	6.4	4.5	0.497	2.1	3.6	23.4	17.0	2.9	3.1	0.466	1.6	2.8
08	3	3	915	33.5	23.5	7.1	4.8	0.518	2.4	4.0	25.2	20.3	5.3	3.3	0.475	1.8	3.0
	4	4	870	38.5	25.8	8.1	3.8	0.636	2.0	3.4	29.5	22.3	6.2	2.3	0.595	1.6	2.6
10	3	3	1080	41.5	28.6	8.8	7.7	0.511	2.9	5.0	31.4	24.3	6.6	4.5	0.470	2.2	3.7
	4	4	1030	48.0	31.7	10.1	6.3	0.631	2.5	4.3	36.6	27.1	7.7	3.8	0.590	1.9	3.3
12	3	3	1320	51.3	34.9	10.8	11.8	0.553	3.6	6.1	39.0	30.1	8.2	7.3	0.510	2.7	4.6
	4	4	1230	58.4	38.3	12.3	9.1	0.659	3.1	5.2	44.9	32.7	9.4	5.9	0.617	2.4	4.0

NOMINAL DX CAPACITIES - HORIZONTAL FAN COILS

DX COOLING CAPACITIES - ENTERING AIR 80°F DB/67°F WB														
				SUCTION TEMPERATURE 42°F					SUCTION TEMPERATURE 45°F					
SIZE	ROWS	CIR.	CFM	TOTAL BTU	SENS BTU	LDB	LWB	APD	TOTAL BTU	SENS BTU	LDB	LWB	APD	
03	3	1	320	14.9	10.0	51.5	51.5	0.185	13.1	9.2	53.8	53.8	0.185	
	4	1	300	16.4	10.4	48.3	48.3	0.222	14.6	9.8	50.2	50.2	0.222	
	6	0		0.0	0.0	0.0	0.0	0.000	0.0	0.0	0.0	0.0	0.000	
04	3	2	480	17.4	12.2	56.7	55.6	0.351	14.8	11.3	58.5	57.5	0.351	
	4	2	450	20.8	14.0	51.5	51.5	0.424	18.0	12.6	54.3	54.2	0.424	
	6	2	410	24.3	15.4	45.7	45.7	0.549	21.4	14.2	48.4	48.4	0.549	
06	3	2	660	24.1	16.8	56.7	55.5	0.407	20.7	15.5	58.5	57.3	0.407	
	4	3	630	27.1	18.3	53.4	53.1	0.505	23.2	16.8	55.5	55.3	0.505	
	6	3	575	32.5	21.2	46.3	46.3	0.658	28.8	19.1	49.6	49.6	0.658	
08	3	3	915	29.0	21.4	58.6	57.1	0.532	24.5	19.1	60.9	58.8	0.532	
	4	4	870	33.9	24.0	54.7	54.6	0.656	28.8	21.6	57.3	56.7	0.656	
	6	6	795	39.6	26.5	49.6	49.6	0.856	33.7	23.9	52.6	52.6	0.856	
10	3	3	1080	36.1	26.0	58.0	56.5	0.519	30.8	24.0	59.7	58.2	0.519	
	4	4	1030	42.2	29.2	54.1	53.8	0.643	36.1	26.9	56.1	56.0	0.643	
	6	6	945	48.8	32.1	48.9	48.9	0.843	42.2	29.6	51.4	51.4	0.843	
12	3	3	1320	44.3	31.8	58.0	56.5	0.558	38.2	29.3	59.7	58.1	0.558	
	4	4	1230	51.3	34.8	54.1	53.6	0.666	44.2	32.1	56.1	55.6	0.666	
	6	6	1090	58.0	37.8	48.3	48.3	0.829	50.5	34.8	50.8	50.8	0.829	

Symbols: LDB: Leaving dry bulb temperature in F°
 GPM: Gallons of water per minute
 WPD: Water pressure drop in feet of water
 LWB: Leaving wet bulb temperature in F°
 APD: Air pressure drop

SOUND POWER LEVEL - HORIZONTAL FAN COILS

Power Levels in dB RE 10⁻¹² Watts per ASHRE Standard 68 and ARI Standard 260 AND 350 latest version.

SOUND POWER LEVELS - HORIZONTAL FAN COILS								
OCTAVE BAND		2	3	4	5	6	7	8
MODEL	FAN SPEED	125	250	500	1000	2000	4000	8000
CENTER FREQUENCY (CPS)								
03	HIGH	CONTACT FACTORY						
	MEDIUM	CONTACT FACTORY						
04	HIGH	CONTACT FACTORY						
	MEDIUM	CONTACT FACTORY						
06	HIGH	60.0	61.0	55.0	54.0	50.5	46.0	36.5
	MEDIUM	54.0	56.0	49.0	46.0	41.0	35.0	24.0
08	HIGH	61.0	63.0	56.0	55.0	52.0	47.0	38.0
	MEDIUM	57.0	58.0	50.0	47.0	43.0	36.0	24.5
10	HIGH	62.0	64.0	58.0	57.0	53.0	48.0	39.0
	MEDIUM	58.5	60.0	51.5	49.0	44.0	37.0	25.0
12	HIGH	63.5	65.5	60.5	58.0	54.0	49.5	40.5
	MEDIUM	59.0	60.5	56.0	50.0	44.5	39.0	25.5

ARI AND UL CERTIFICATION DATA - HORIZONTAL FAN COILS

The following units are certified in compliance with the Air Conditioning and Refrigeration Institute (ARI), Industry Standard 440 for room fan coil units.

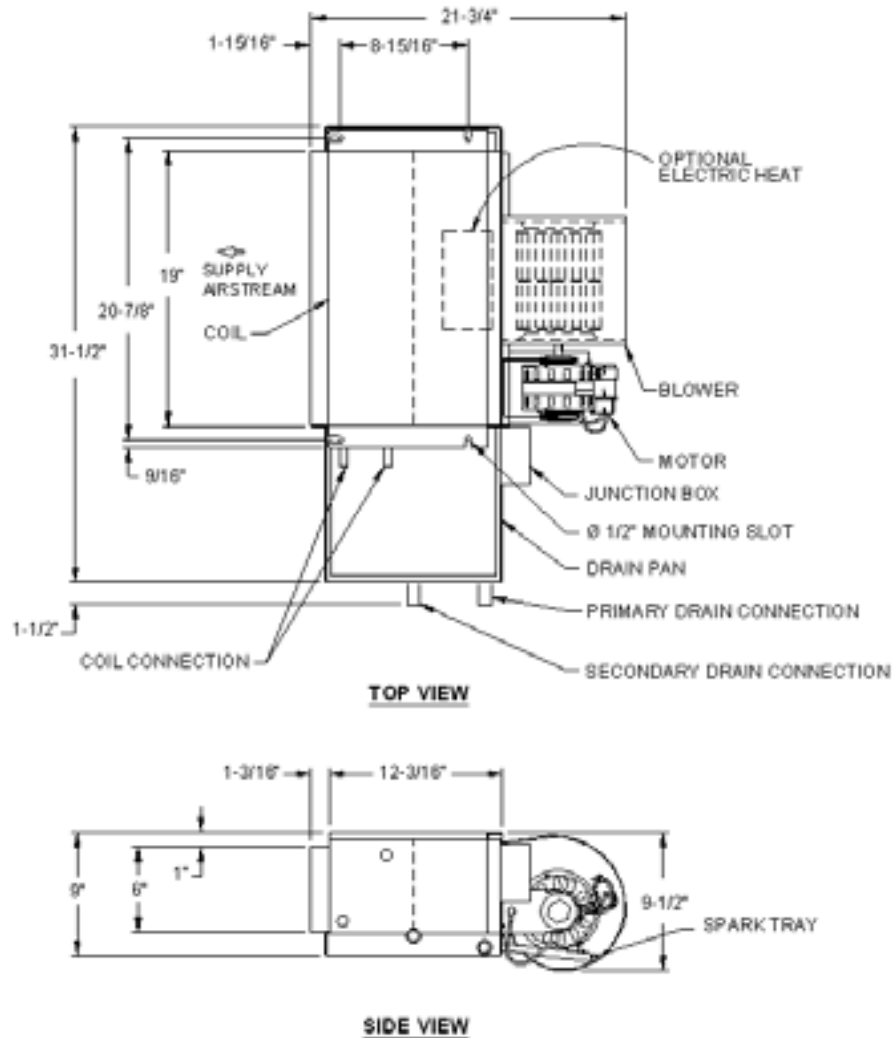
ARI and UL CERTIFICATION DATA						
ARI APPROVED STANDARD RATINGS				COOLING CAPACITY		POWER INPUT WATTS
UNIT SIZE	RATED CFM	GPM	P.D. FT. H ₂ O	TOTAL COOLING BTUH	SENSIBLE COOLING BTUH	
03	NOT AVAILABLE					
04	NOT AVAILABLE					
06	680	2.9	2.0	14,200	12,600	280
08	900	4.4	3.3	21,100	17,650	339
10	1,100	6.2	4.7	30,200	23,400	378
12	1,260	7.5	6.7	39,400	29,300	403

Notes: Based on 80° DB and 67° WB EAT. 45°F EWT. 10°F temperature rise. High fan speed. Motor voltage 115/1/60 power source. Air flow under dry coil conditions. Water pressure drops shown in feet of water. **Data shown for (2) motors.

UL APPROVAL

All USA Coil & Air Fan Coil units are listed by UNDERWRITERS' LABORATORIES, INC. (UL) under the "Re-Examination Service". This listing signifies that USA Coil & Air fan coil units have been examined by UL and found to be in complete compliance with applicable standards. The reexamination service also includes periodic visits by UL inspectors at the USA Coil & Air factory to assure continuing compliance of all listed products. All units are listed under UL Classification Guide No. LZQV.

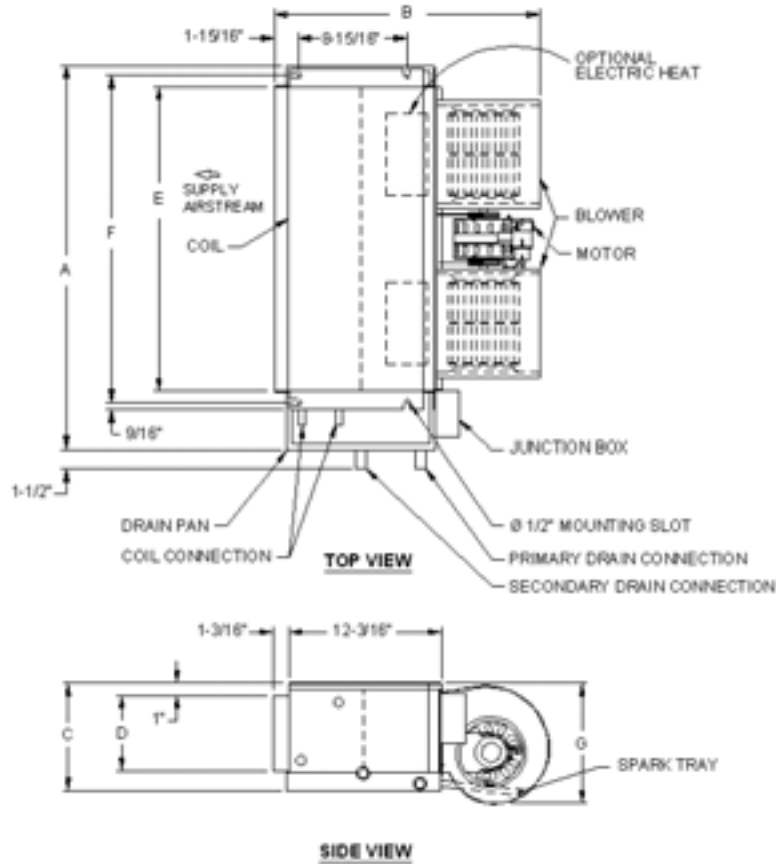
HORIZONTAL BASIC - 300 CFM



Model DWHB-03 / DXHB-03

- Right-hand unit shown, left-hand unit opposite.
- Coil connections determined by facing the supply-air opening.
- Electrical junction box is located on the same side as the coil connections.
- Drain pan is powder-coated epoxy with a 1/4" thick closed-cell insulation and has 3/4" NPT primary and secondary drain connections.
- Entire cabinet, scroll and blower wheel are heavy-gauge, galvanized steel.
- Coil connections: 1/2" CW and HW on DWHB-03 / DXHB-03

HORIZONTAL BASIC - 400 TO 1200 CFM

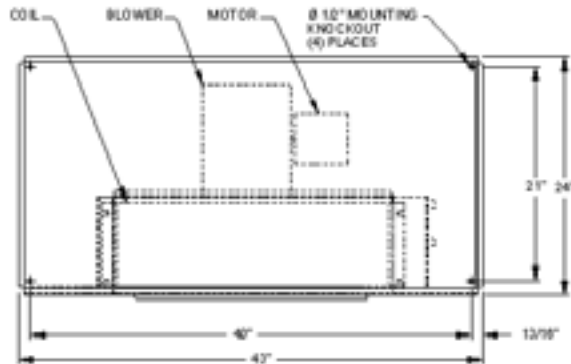


HORIZONTAL BASIC							
MODEL DWHB DXHB	A	B	C	D	E	F	G
400	31 1/2	21 3/4	9	6	25	26 7/8	9 1/2
600	37 1/2	21 3/4	9	6	31	32 7/8	9 1/2
800	37 1/2	22 1/4	10 3/8	7 3/16	31	32 7/8	10 5/8
1000	49 1/2	22 1/4	10 3/8	7 3/16	37	38 7/8	10 5/8
1200	49 1/2	22 1/4	10 3/8	7 3/16	43	44 7/8	10 5/8

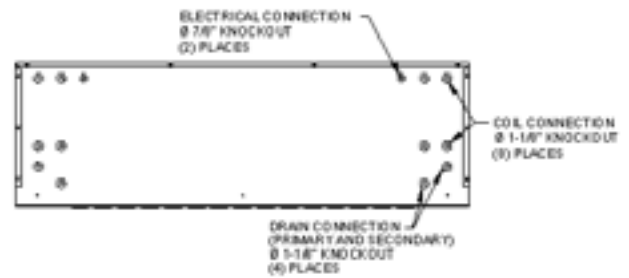
Model DWHB & DXHB-04 to 12

- Right-hand unit shown, left-hand unit opposite.
- Coil connections determined by facing the supply-air opening.
- Electrical junction box is located on the same side as the coil connections.
- Drain pan is powder-coated epoxy with a 1/4" thick closed-cell insulation and has 3/4" NPT primary and secondary drain connections.
- Entire cabinet, scroll and blower wheel are heavy-gauge, galvanized steel.
- Coil connections: 1/2" CW on DWHB & DXHB-04 & 06. 3/4" on DWHB & DXHB-08-12 and 1/2" HW on DWHB & DXHB-04-12

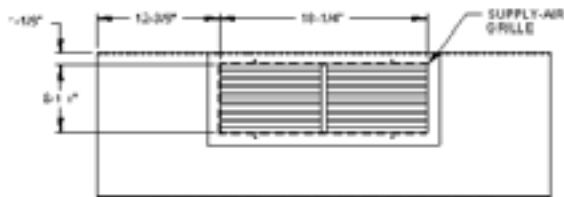
HORIZONTAL DELUXE - 300 CFM



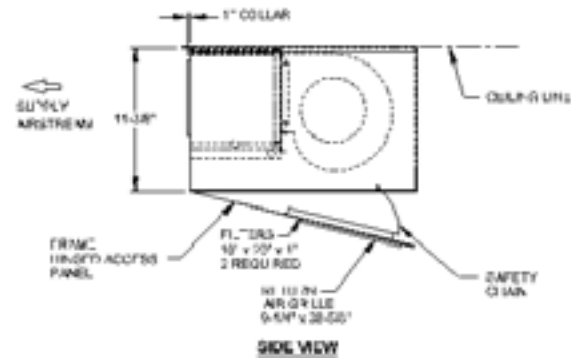
TOP VIEW



REAR VIEW (COIL CONNECTIONS)



FRONT VIEW



SIDE VIEW

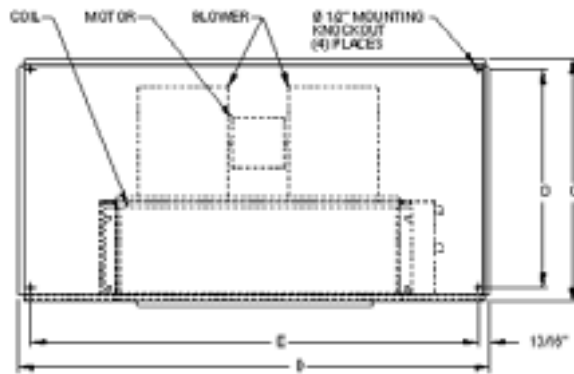
Model DWHD & DXHD-03

- Right-hand unit shown, left-hand unit opposite.
- Coil connections determined by facing the supply-air opening.
- Electrical junction box is located on the same side as the coil connections.
- Drain pan is powder-coated epoxy with a 1/4" thick closed-cell insulation and has 3/4" NPT primary and secondary drain connections.
- Entire cabinet, scroll and blower wheel are heavy-gauge, galvanized steel.
- Coil connections: 1/2" CW and HW on size 03.

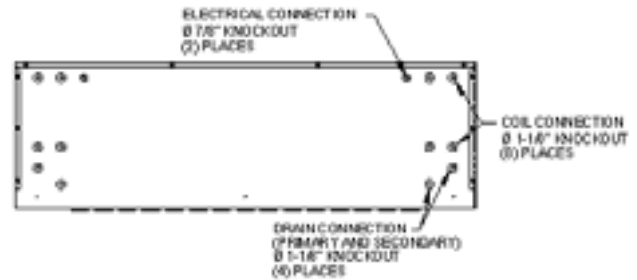
Horizontal Fan Coils

Dimensional Drawings

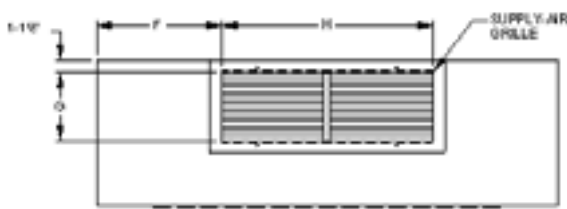
HORIZONTAL DELUXE - 400 TO 1200 CFM



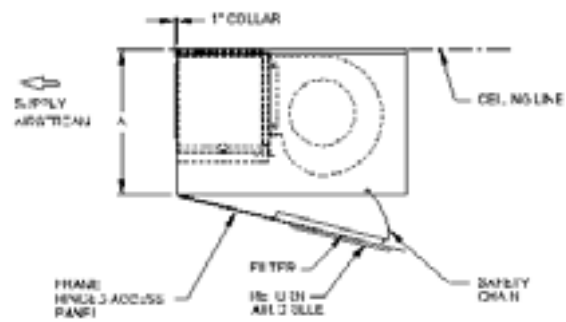
TOP VIEW



REAR VIEW (COIL CONNECTIONS)



FRONT VIEW



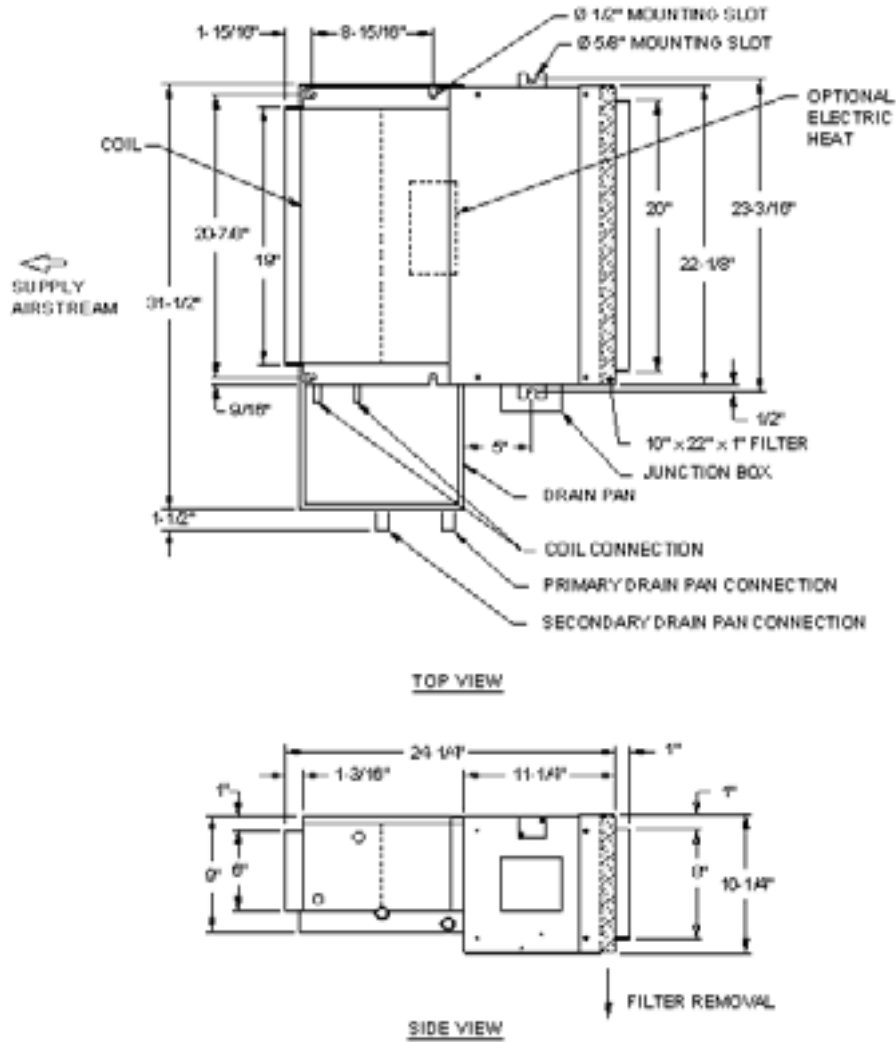
SIDE VIEW

HORIZONTAL DELUXE									
MODEL DWHD DXHD	A	B	C	D	E	F	G	H	FILTER SIZE
400	10 3/8	43	24	21	40	9 3/8	6 1/4	24 1/4	(2) 12x20
600	12 3/8	53	28	25	50	11 3/8	6 1/4	30 1/4	(2) 12x25
800	12 3/8	53	28	25	50	11 3/8	7 3/4	30 1/4	(2) 12x25
1000	12 3/8	61	28	25	58	12 3/8	7 3/4	36 1/4	(2) 12x25
1200	12 3/8	61	28	25	58	9 3/8	7 3/4	42 1/4	(2) 12x25

Model DWHD & DXHD-04 to 12

- Right-hand unit shown, left-hand unit opposite.
- Coil connections determined by facing the supply-air opening.
- Electrical junction box is located on the same side as the coil connections.
- Drain pan is powder-coated epoxy with a 1/4" thick closed-cell insulation and has 3/4" NPT primary and secondary drain connections.
- Entire cabinet, scroll and blower wheel are heavy-gauge, galvanized steel.
- Coil connections: 1/2" CW on sizes 04 & 06, 3/4" on sizes 08-12 and 1/2" HW on sizes 04-12

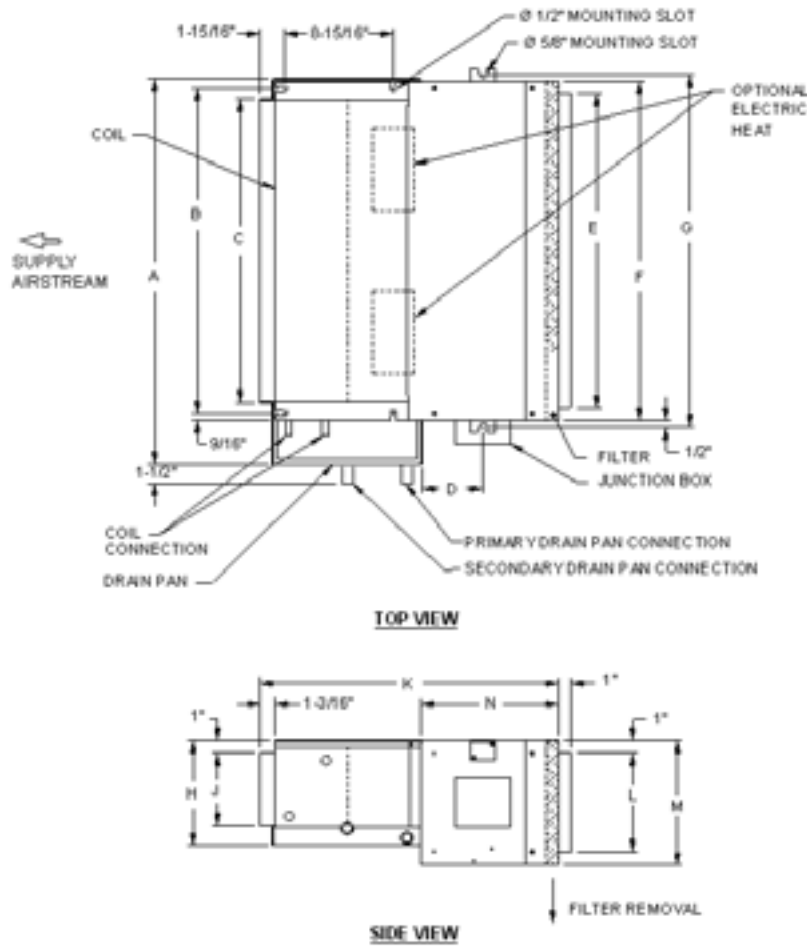
HORIZONTAL REAR RETURN-AIR PLENUM - 300 CFM



Model DWHR & DXHR-03

- Right-hand unit shown, left-hand unit opposite.
- Coil connections determined by facing the supply-air opening.
- Electrical junction box is located on the same side as the coil connections.
- Drain pan is powder-coated epoxy with a 1/4" thick closed-cell insulation and has 3/4" NPT primary and secondary drain connections.
- Entire cabinet, scroll and blower wheel are heavy-gauge, galvanized steel.
- Coil connections: 1/2" CW and HW on size 03.

HORIZONTAL REAR RETURN-AIR PLENUM - 400 TO 1200 CFM

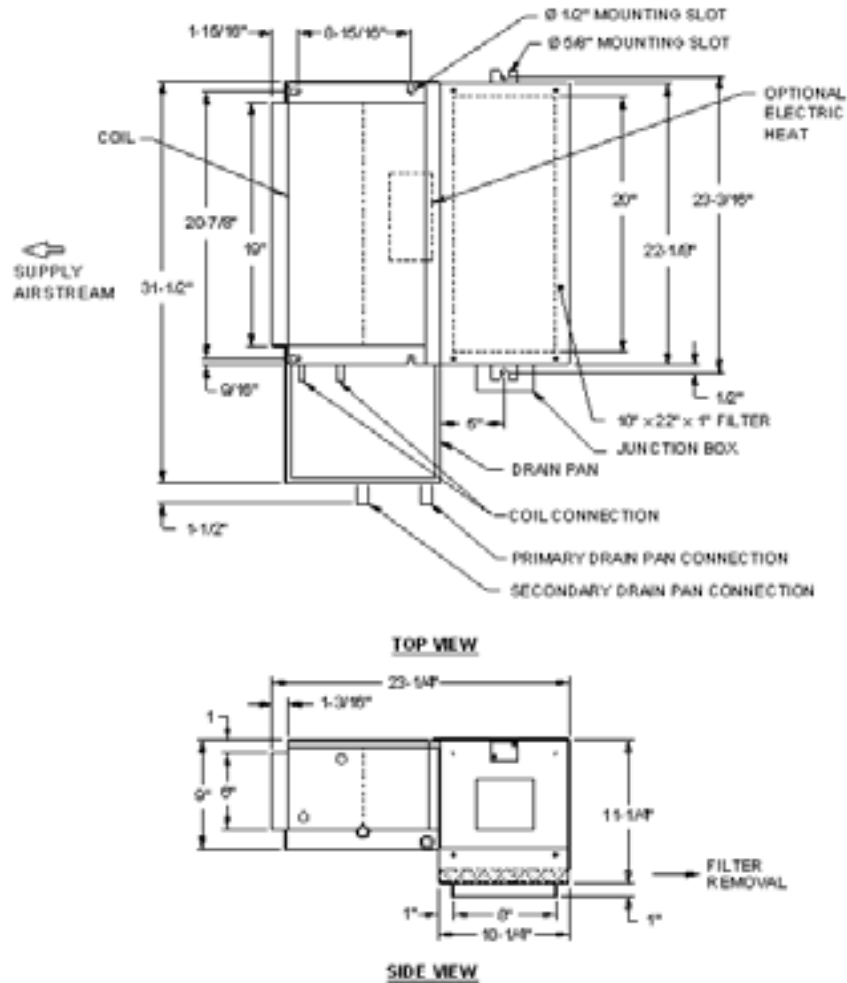


HORIZONTAL REAR RETURN-AIR PLENUM														
MODEL DWHR DXHR	A	B	C	D	E	F	G	H	J	K	L	M	N	FILTER SIZE
400	31 1/2	26 7/8	25	5	26	28	29 3/16	9	6	24 1/2	8	10 1/4	11 1/4	10x28x1
600	37 1/2	32 7/8	31	5	32	34	35 3/16	9	6	24 1/2	8	10 1/4	11 1/4	10x34x1
800	37 1/2	32 7/8	31	6	32	34	35 3/16	10 3/8	7 13/16	26 1/2	10	12 1/4	13 1/4	12x34x1
1000	49 1/2	38 7/8	37	6	38	40	41 3/16	10 3/8	7 13/16	26 1/2	10	12 1/4	13 1/4	12x40x1
1200	49 1/2	44 7/8	43	6	44	46	47 3/16	10 3/8	7 13/16	26 1/2	10	12 1/4	13 1/4	12x46x1

Model DWHR & DXHR-04 to 12

- Right-hand unit shown, left-hand unit opposite.
- Coil connections determined by facing the supply-air opening.
- Electrical junction box is located on the same side as the coil connections.
- Drain pan is powder-coated epoxy with a 1/4" thick closed-cell insulation and has 3/4" NPT primary and secondary drain connections.
- Entire cabinet, scroll and blower wheel are heavy-gauge, galvanized steel.
- Coil connections: 1/2" CW on sizes 04 & 06, 3/4" on sizes 08-12 and 1/2" HW on sizes 04-12

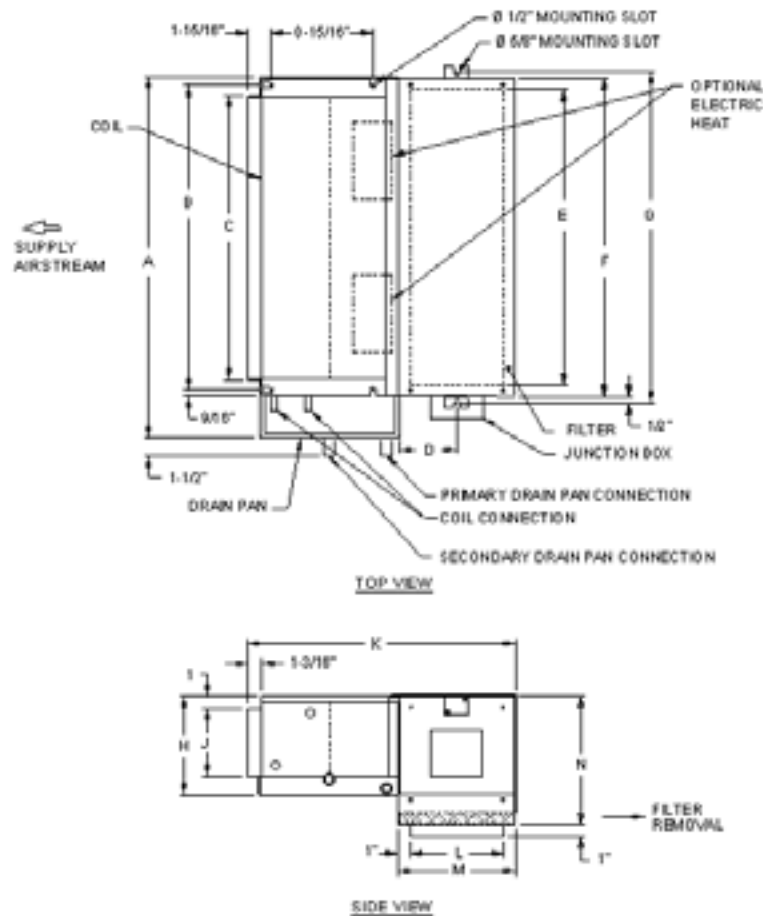
HORIZONTAL BOTTOM RETURN-AIR PLENUM - 300 CFM



Model DWHR & DXHR-03

- Right-hand unit shown, left-hand unit opposite.
- Coil connections determined by facing the supply-air opening.
- Electrical junction box is located on the same side as the coil connections.
- Drain pan is powder-coated epoxy with a 1/4" thick closed-cell insulation and has 3/4" NPT primary and secondary drain connections.
- Entire cabinet, scroll and blower wheel are heavy-gauge, galvanized steel.
- Coil connections: 1/2" CW and HW on size 03.

HORIZONTAL BOTTOM RETURN-AIR PLENUM - 400 TO 1200 CFM



HORIZONTAL REAR RETURN-AIR PLENUM														
MODEL DWHR DXHR	A	B	C	D	E	F	G	H	J	K	L	M	N	FILTER SIZE
400	31 1/2	26 7/8	25	5	26	28	29 3/16	9	6	23 1/2	8	10 1/4	11 1/4	10x28x1
600	37 1/2	32 7/8	31	5	32	34	35 3/16	9	6	23 1/2	8	10 1/4	11 1/4	10x34x1
800	37 1/2	32 7/8	31	6	32	34	35 3/16	10 3/8	7 13/16	25 1/2	10	12 1/4	13 1/4	12x34x1
1000	49 1/2	38 7/8	37	6	38	40	41 3/16	10 3/8	7 13/16	25 1/2	10	12 1/4	13 1/4	12x40x1
1200	49 1/2	44 7/8	43	6	44	46	47 3/16	10 3/8	7 13/16	25 1/2	10	12 1/4	13 1/4	12x46x1

Model DWHR & DXHR-04 to 12

- Right-hand unit shown, left-hand unit opposite.
- Coil connections determined by facing the supply-air opening.
- Electrical junction box is located on the same side as the coil connections.
- Drain pan is powder-coated epoxy with a 1/4" thick closed-cell insulation and has 3/4" NPT primary and secondary drain connections.
- Entire cabinet, scroll and blower wheel are heavy-gauge, galvanized steel.
- Coil connections: 1/2" CW on sizes 04 & 06, 3/4" on sizes 08-12 and 1/2" HW on sizes 04-12

Stock Vertical Fan Coils from USA Coil & Air



**Bottom Return/Top Outlet
Basic Vertical
Direct Drive
in Water and DX**



**Bottom Return/Top Outlet
Deluxe Vertical
Direct Drive
in Water and DX**

Basic Vertical Model (WVBBT & XVBBT) is a high-static, ducted vertical cased fan coil with bottom return. It is primarily used in vertical floor-mounted or hideaway applications. Fan coil is furred into partition walls or hidden in closets, utility rooms and other concealed locations with a ducted discharge. A removable front access panel facilitates easy servicing of the coil, blower assembly, with quick-connect plug, and filter. A one-inch discharge duct flange is standard on top panel of each unit.

Deluxe Vertical Model (WVDBT & XVDBT) is manufactured of cold-rolled steel, phosphate conversion-coated then finished in a soft-white, powder-coated epoxy that has been tested to 500 hours of salt spray test in accordance with ASTM B117.

**Front Return/Top Outlet
Basic Vertical
Direct Drive
in Water and DX**



Front Return with Top Supply Vertical Model (WVBFT & XVBFT) is a high-static, ducted vertical fan coil for installation in a closet-type enclosure. The front panel is removable for easy service access to the slide-out blower assembly, with quick-connect plug. Front return-air filter may be removed without removing front panel. Top-discharge opening has a one-inch duct collar. The Return-Air grille option allows unit to be furred in. Grille mounts to drywall for easy access without the expense of a closet door.

**Front Return/Front Outlet
Basic Vertical
Direct Drive
in Water and DX
Special Unit - Contact Factory**



Front Supply and Front Return Vertical Model (WVBFF & XVBFF) is a high static, ducted vertical fan coil for installation in a closet-type enclosure. Easy service access to the slide-out blower assembly, with quick-connect plug. Front return-air filter may be removed without removing front panel. Front-discharge opening has a one-inch duct collar.

* Contact Factory for drawings and/or performance.

Quick Shipped with Features and Options You Want.

VERTICAL FAN COIL FEATURES

Coils – 1/2" OD copper tube with aluminum fins (12 FPI) equipped with manual-air vent. DX and steam coils do not include manual-air vent. Coils are 100% underwater pressure tested at 350 PSI with a 300 PSI working pressure.

Cabinet – Heavy-gauge galvanized steel with 1/2" thick, over three pound density, neoprene coated fiberglass.

Drain Pan – Galvanized and powder coated epoxy with a 1/4" thick closed-cell insulation and has primary and secondary drain connections.

Motors – All motors are 3-speed, 115V/1/60 PSC with quick-connect plug.

Blower – Easy slide-out, draw-through blower and motor assembly.

Controls – Controls and motors are factory-wired and terminated in a junction box for single-point power supply.

Air Openings – One-inch duct collar on supply-air openings.

Filter – One-inch fiberglass, throwaway filter.

Added Features – Protective cardboard covers openings during shipment and construction. Each unit is tagged and crated as scheduled for installation.

Certification – UL and cUL approved, ARI certified and 100% factory tested.

OPTIONAL FEATURES FOR 'BEST IN THE INDUSTRY' FAN/COILS.*

Cabinet – Soft-white, powder-coated epoxy cabinet.

Drain Pans – Stainless steel, double-wall.

Coils – Copper fins, phenolic coated, stainless-steel end plates. All options are available on one to six rows.

Insulation – fiberglass, foil-faced, elastomeric and double-wall (solid or perforated) in 1/2" and 1" thickness.

Systems – Two or Four-pipe, Hydronic cooling/heating, Steam, Direct-expansion (DX) and/or Electric Heat.

Grilles – eliminates the need for closet doors - available in custom colors.

Controls – Unlimited selection of factory-mounted valves and controls.

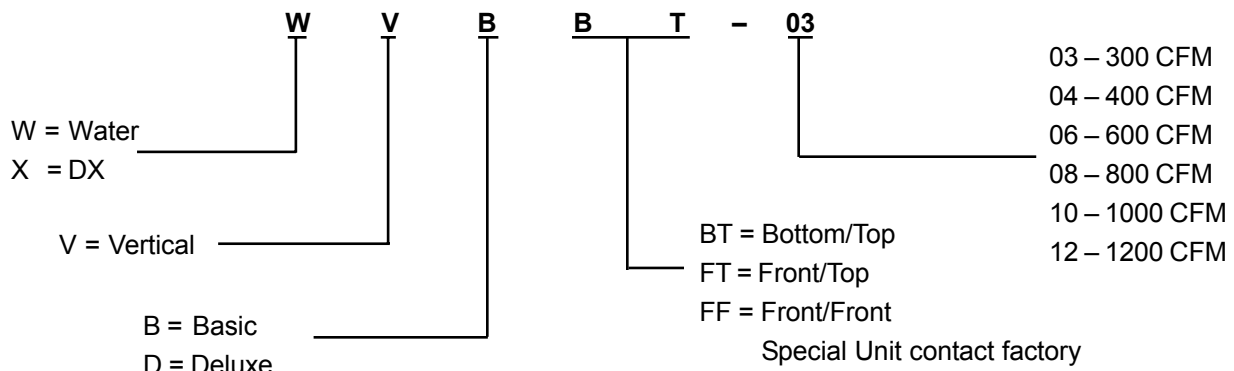
Filters – Two-inch thick throwaway, washable.

Flow-Control Pump – For water heating applications.

Electric Strip Heat – From 1 to 9 kW

*Not all options available on Quickship.

VERTICAL FAN COIL NOMENCLATURE



PERFORMANCE DATA - VERTICAL FAN COILS - AIR FLOW DATA

MODELS *	EXTERNAL STATIC PRESSURE (INCHES H ₂ O)																		
	STD COIL ROW- S	0.00			0.05			0.10			0.15			0.20			0.25		
		HI	MED	LO	HI	MED	LO	HI	MED	LO	HI	MED	LO	HI	MED	LO	HI	MED	LO
WVBBT-04	3	525	430	355	515	420	340	505	405	325	495	395	310	485	385	295	480	375	280
WVBBT-06	3	610	480	375	595	465	355	575	450	335	560	435	310	545	420	290	530	405	270
WVBBT-08	3	780	605	510	760	595	495	740	580	480	720	565	470	700	555	455	680	540	440
WVBBT-10	3	930	705	545	905	690	535	885	675	520	860	665	510	840	650	500	815	635	485
WVBBT-12	3	1135	930	705	1100	905	690	1070	885	675	1040	860	665	1010	840	650	980	815	635
WVBFT-04	CONTACT FACTORY																		
WVBFT-06	4	750	640	555	730	625	540	710	605	525	685	590	505	665	570	490	640	555	475
WVBFT-08	4	975	855	670	955	835	655	930	810	640	905	790	630	880	765	615	855	745	600
WVBFT-10	4	1100	965	790	1060	935	765	1025	905	745	990	875	725	955	845	700	920	815	680
WVBFT-12	4	1350	1115	630	1315	1100	625	1280	1080	615	1240	1060	610	1205	1045	600	1165	1025	590
WVBFF-04	CONTACT FACTORY																		
WVBFF-06	4	750	640	555	730	625	540	710	605	525	685	590	505	665	570	490	640	555	475
WVBFF-08	4	975	855	670	955	835	655	930	810	640	905	790	630	880	765	615	855	745	600
WVBFF-10	4	1100	965	790	1060	935	765	1025	905	745	990	875	725	955	845	700	920	815	680
WVBFF-12	4	1350	1115	630	1315	1100	625	1280	1080	615	1240	1060	610	1205	1045	600	1165	1025	590

* Air Flow Data same for WVDBT

NOTE: Air flow data for Basic and Return Plenum with Four-row coils and for Deluxe (Heat only) based on Two-row coils. For each additional coil row add 0.05 to the desired static pressure drop. Air flow data under dry.

DX CAPACITIES - VERTICAL FAN COILS - MODEL XVBFT (FRONT/TOP)

DX COOLING CAPACITIES - ENTERING AIR 80°F DB/67°F WB													
				SUCTION TEMPERATURE 42°F					SUCTION TEMPERATURE 45°F				
MODEL XVBFT	ROWS	CIR.	CFM	TOTAL BTU	SENS BTU	LDB	LWB	APD	TOTAL BTU	SENS BTU	LDB	LWB	APD
06	3	2	795	25.0	18.0	59.3	57.2	0.605	21.4	16.6	60.9	58.8	0.605
	4	4	750	26.4	19.1	56.7	55.9	0.737	22.0	17.6	58.5	58.0	0.722
	6	6	685	31.2	21.3	51.5	51.5	0.960	26.3	19.7	53.8	53.8	0.722
08	3	3	1025	31.3	22.5	59.9	57.5	0.608	26.5	21.4	60.9	59.1	0.608
	4	4	975	36.8	26.2	55.4	55.0	0.750	31.3	24.2	57.3	57.0	0.750
	6	6	895	43.6	29.2	50.2	50.2	0.985	37.2	26.9	52.6	52.6	0.985
10	3	3	1160	37.1	27.1	58.6	57.0	0.580	31.8	24.2	60.9	58.6	0.580
	4	4	1100	43.7	30.4	54.7	54.3	0.712	37.4	28.0	56.7	56.3	0.712
	6	6	1000	50.7	34.0	48.9	48.9	0.921	43.9	30.7	52.0	52.0	0.921
12	3	4	1415	46.2	33.1	58.6	56.8	0.539	39.4	30.5	60.3	58.5	0.539
	4	4	1350	56.6	38.2	54.1	53.5	0.668	49.1	35.2	56.1	55.5	0.668
	6	6	1245	66.2	43.2	48.3	48.3	0.884	57.8	39.8	50.8	50.8	0.884

Symbols: LDB: Leaving dry bulb temperature in F° GPM: Gallons of water per minute
 WPD: Water pressure drop in feet of water LWB: Leaving wet bulb temperature F°
 APD: Air pressure drop

NOTE: Use USA Coil & Air coil calculation program for detailed ratings at other entering air or water temperatures.

CFM used for above capacities are high speed at nominal CFM.

Vertical Fan Coils

Cooling Capacities

CHILLED WATER CAPACITIES - VERTICAL FAN COILS (BOTTOM/TOP)

COOLING CAPACITIES FOR WATER TEMPERATURE RISE 10° - ENTERING AIR 80°F DB/67°F WB																	
				ENTERING WATER TEMPERATURE 40°							ENTERING WATER TEMPERATURE 45°						
MODEL WVBBT WVDBT	ROWS	CIR.	CFM	TOTAL BTU	SENS BTU	GPM	WPD	APD	GPM/ CIR.	TUBE VEL.	TOTAL BTU	SENS BTU	GPM	WPD	APD	GPM/ CIR.	TUBE VEL.
04	3	3	525	24.6	16.0	5.2	4.2	0.201	1.7	2.9	18.7	13.6	3.9	2.5	0.188	1.3	2.2
	4	4	515	27.9	17.7	5.9	3.0	0.258	1.5	2.5	21.5	15.0	4.5	2.1	0.244	1.1	1.9
06	3	3	610	27.0	17.9	5.6	4.4	0.254	1.6	2.7	20.6	15.3	4.4	3.0	0.237	1.3	2.1
	4	4	595	30.8	19.8	6.5	3.5	0.324	1.6	2.7	23.8	17.0	5.0	2.6	0.306	1.3	2.1
08	3	3	780	31.7	21.5	6.7	5.9	0.370	2.2	3.8	23.9	18.3	5.0	3.9	0.342	1.7	2.8
	4	4	755	36.5	23.8	7.7	4.8	0.467	1.9	3.3	27.9	20.3	5.9	2.9	0.438	1.5	2.5
10	3	3	930	36.8	24.9	7.8	8.5	0.437	2.6	4.4	27.8	21.5	5.8	5.0	0.403	1.9	3.3
	4	4	895	42.5	27.9	9.0	6.9	0.547	2.2	3.8	32.5	23.8	6.8	4.1	0.513	1.7	2.9
12	3	3	1135	41.5	28.8	8.8	10.7	0.591	2.9	5.0	31.3	24.8	6.6	6.2	0.542	2.2	3.7
	4	4	1075	47.8	31.9	10.0	8.4	0.722	2.5	4.2	36.7	27.6	7.7	5.2	0.675	1.9	3.3

CHILLED WATER CAPACITIES - VERTICAL FAN COILS (FRONT/TOP)

COOLING CAPACITIES FOR WATER TEMPERATURE RISE 10° - ENTERING AIR 80°F DB/67°F WB																	
				ENTERING WATER TEMPERATURE 40°							ENTERING WATER TEMPERATURE 45°						
MODEL WVBBT WVDBT	ROWS	CIR.	CFM	TOTAL BTU	SENS BTU	GPM	WPD	APD	GPM/ CIR.	TUBE VEL.	TOTAL BTU	SENS BTU	GPM	WPD	APD	GPM/ CIR.	TUBE VEL.
06	3	3	795	29.4	20.4	6.2	12.5	0.594	3.1	5.3	22.2	17.6	4.7	7.7	0.545	2.3	4.0
	4	4	750	30.6	21.2	6.4	2.9	0.702	1.6	2.7	23.1	18.3	4.8	2.1	0.650	1.2	2.1
08	3	3	1025	36.2	25.6	7.6	6.8	0.588	2.5	4.3	27.5	22.1	5.8	4.1	0.540	1.9	3.3
	4	4	975	42.2	28.6	8.8	5.6	0.726	2.2	3.7	32.3	24.7	6.9	3.5	0.678	1.7	2.9
10	3	3	1160	43.3	29.8	9.2	11.0	0.569	3.1	5.2	32.8	25.7	6.9	6.4	0.523	2.3	3.9
	4	4	1100	50.2	33.5	10.6	8.9	0.697	2.7	4.5	38.3	28.6	8.1	5.3	0.651	2.0	3.4
12	3	3	1415	53.3	36.9	11.3	7.7	0.529	2.8	4.8	40.2	31.4	8.5	4.8	0.486	2.1	3.6
	4	4	1350	65.1	42.5	13.7	14.9	0.663	3.4	5.8	50.1	36.4	10.5	9.5	0.622	2.6	4.4

DX CAPACITIES - VERTICAL FAN COILS - MODEL XVBBT & XVDBT (BOTTOM/TOP)

DX COOLING CAPACITIES - ENTERING AIR 80°F DB/67°F WB														
				SUCTION TEMPERATURE 42°F					SUCTION TEMPERATURE 45°F					
MODEL XVBBT XVDBT	ROWS	CIR.	CFM	TOTAL BTU	SENS BTU	LDB	LWB	APD	TOTAL BTU	SENS BTU	LDB	LWB	APD	
04	3	3	525	22.1	15.2	53.4	53.4	0.201	18.9	13.7	56.1	55.6	0.201	
	4	4	515	25.0	16.8	50.2	50.2	0.260	21.5	15.1	53.2	53.2	0.201	
	6	6	205	29.0	18.6	46.3	46.3	0.378	25.1	16.8	49.6	49.6	0.378	
06	3	3	610	24.2	1.8	54.7	54.3	0.256	20.7	15.1	57.3	56.4	0.256	
	4	4	595	27.6	18.5	51.5	51.5	0.328	23.7	17.1	53.8	53.8	0.328	
	6	6	565	31.6	20.4	47.0	47.0	0.453	27.3	18.8	49.6	49.6	0.453	
08	3	3	780	27.9	19.9	56.7	55.7	0.376	23.7	18.3	58.5	57.6	0.376	
	4	4	755	32.3	21.9	53.4	53.1	0.477	27.6	20.2	55.5	55.4	0.477	
	6	6	710	37.6	24.6	48.3	48.3	0.650	32.3	22.2	51.4	51.4	0.650	
10	3	3	930	32.1	23.1	57.3	56.2	0.444	27.4	20.6	59.7	57.9	0.444	
	4	4	895	37.4	26.0	53.4	53.4	0.557	32.0	23.4	56.1	55.7	0.557	
	6	6	835	43.7	28.4	48.9	48.9	0.751	37.7	26.1	51.4	51.4	0.751	
12	3	3	1135	35.4	25.7	59.3	57.3	0.604	30.3	23.7	60.9	58.9	0.604	
	4	4	1075	41.7	29.7	54.7	54.6	0.741	35.6	26.6	57.3	56.7	0.741	
	6	6	980	48.9	32.6	49.6	49.6	0.962	42.1	29.4	52.6	52.6	0.962	

Symbols: LDB: Leaving dry bulb temperature in F° GPM: Gallons of water per minute
 WPD: Water pressure drop in feet of water LWB: Leaving wet bulb temperature F°
 ADP: Air pressure drop

NOTE: Use USA Coil & Air coil calculation program for detailed ratings at other entering air or water temperatures.

CFM used for above capacities are high speed at nominal CFM.

HOT WATER / STEAM CAPACITIES - VERTICAL FAN COILS - MODEL WVBBT & WVDBT (BOTTOM/TOP)

HOT WATER

ENTERING CONDITIONS: 70°F DB AIR/180°F EWT									
				TEMPERATURE DROP 20°F					
MODEL WVBBT WVDBT	ROWS	CIR.	CFM	TOTAL BTU	GPM	WPD	APD	GPM/ CIR.	TUBE VEL.
04	1	1	555	24.4	2.6	3.4	0.083	2.6	4.4
	2	2	540	39.6	4.2	3.0	0.158	2.1	3.6
06	1	1	670	27.1	2.9	4.1	0.110	2.9	4.9
	2	2	640	44.4	4.7	3.7	0.206	2.4	4.0
08	1	1	885	31.9	7.3	5.4	0.171	7.3	12.3
	2	2	830	52.5	5.6	5.1	0.308	2.8	4.7
10	1	1	1035	38.0	4.0	2.1	0.142	2.0	3.4
	2	2	980	65.7	7.0	9.1	0.261	3.5	5.9
12	1	1	1275	44.6	4.6	13.2	0.198	4.6	7.7
	2	2	1215	74.9	7.7	11.0	0.367	3.8	6.5

STEAM

HEATING CAPACITIES - STEAM: 5 PSI						
			ENTERING AIR 70°F			
MODEL WVBBT WVDBT	ROWS	CFM	TOTAL BTU	LDB	#S COND	APD
04	1	560	43.6	141.2	45.4	0.111
	2	540	63.2	177.1	65.8	0.209
06	1	685	48.8	135.1	50.8	0.156
	2	645	71.6	171.5	74.5	0.281
08	1	915	57.0	127.0	59.4	0.258
	2	840	85.6	163.2	89.1	0.443
10	1	1065	70.2	130.3	73.1	0.209
	2	990	104.5	166.6	108.8	0.368
12	1	1275	77.2	125.4	80.4	0.287
	2	1230	120.7	159.7	125.6	0.538

HOT WATER / STEAM CAPACITIES - VERTICAL FAN COILS - MODEL WVBF (FRONT/TOP)

HOT WATER

ENTERING CONDITIONS: 70°F DB AIR/180°F EWT									
				TEMPERATURE DROP 20°F					
MODEL WVBF	ROWS	CIR.	CFM	TOTAL BTU	GPM	WPD	APD	GPM/ CIR.	TUBE VEL.
06	1	2	900	31.0	3.3	1.3	0.162	1.6	2.8
	2	2	840	54.1	5.7	5.4	0.291	2.9	4.8
08	1	2	1145	40.8	4.3	2.3	0.160	2.2	3.7
	2	2	1080	70.3	7.2	9.0	0.291	3.6	6.1
10	1	1	1325	50.1	5.1	17.7	0.158	5.1	8.7
	2	2	1235	81.6	8.3	13.6	0.282	4.2	7.0
12	1	2	1580	59.5	6.3	5.0	0.141	3.1	5.3
	2	3	1490	10.3	10.7	8.1	0.258	3.6	6.0

STEAM

HEATING CAPACITIES - STEAM: 5 PSI						
			ENTERING AIR 70°F			
MODEL WVBF	ROWS	CFM	TOTAL BTU	LDB	#S COND	APD
06	1	940	59.2	127.6	61.6	0.248
	2	860	88.4	164.0	92.0	0.424
08	1	1195	75.6	127.9	78.8	0.243
	2	1105	113.6	164.0	118.2	0.424
10	1	1390	88.1	128.0	91.7	0.242
	2	1265	130.8	164.6	136.2	0.410
12	1	1645	108.1	130.1	112.5	0.211
	2	1525	160.8	166.4	167.4	0.371

SOUND POWER LEVEL - HORIZONTAL FAN COILS

Power Levels in dB RE 10⁻¹² Watts per ASHRE Standard 68 and ARI Standard 260 AND 350 latest version.

SOUND POWER LEVELS - VERTICAL FAN COILS								
OCTAVE BAND		2	3	4	5	6	7	8
FAN SPEED		125	250	500	1000	2000	4000	8000
BASIC & DELUXE MODELS	FAN SPEED	CENTER FREQUENCY (CPS)						
	04	HIGH	58.1	51.8	48.6	44.5	36.3	32.5
MEDIUM		54.5	39.5	38.1	33.6	27.3	24.3	26.3
LOW		49.6	38.5	37.2	32.1	26.1	22.7	24.6
06	HIGH	59.5	50.1	49.1	43.2	38.1	34.7	35.1
	MEDIUM	56.3	47.3	44.6	38.8	33.4	32.0	33.4
	LOW	50.9	45.5	41.2	35.6	30.7	27.3	26.1
08	HIGH	62.1	56.6	53.3	48.3	44.2	40.8	36.5
	MEDIUM	56.6	48.2	45.7	41.6	38.2	32.9	29.7
	LOW	51.8	44.6	39.6	36.2	33.8	27.8	24.4
10	HIGH	63.2	56.9	57.3	53.1	47.3	41.8	39.8
	MEDIUM	58.1	51.7	53.8	48.3	42.4	37.2	31.7
	LOW	55.5	46.9	46.1	41.4	35.6	32.3	29.1
12	HIGH	65.3	61.4	60.1	56.5	49.9	45.1	43.1
	MEDIUM	60.4	55.9	54.2	52.1	44.7	41.1	35.4
	LOW	56.3	51.7	46.8	44.3	36.9	35.6	30.1

SOUND POWER LEVELS - VERTICAL FAN COILS								
OCTAVE BAND		2	3	4	5	6	7	8
FAN SPEED		125	250	500	1000	2000	4000	8000
FRONT /TOP FRONT /FRONT	FAN SPEED	CENTER FREQUENCY (CPS)						
	04	HIGH	CONTACT FACTORY					
MEDIUM								
LOW								
06	HIGH	59.2	52.1	51.6	46.4	41.4	36.0	33.6
	MEDIUM	53.6	49.3	47.7	41.5	35.5	33.8	26.0
	LOW	51.8	47.1	44.3	36.4	34.2	31.5	24.4
08	HIGH	60.1	57.0	55.7	53.0	49.7	45.0	37.0
	MEDIUM	56.7	52.3	47.0	45.4	41.2	34.2	27.8
	LOW	53.4	46.5	43.7	42.2	39.6	32.7	25.4
10	HIGH	61.5	59.8	57.2	56.0	52.1	47.1	39.1
	MEDIUM	57.2	54.1	52.2	49.3	42.1	38.9	27.3
	LOW	54.1	48.6	45.8	44.5	39.7	36.7	26.1
12	HIGH	62.5	61.3	59.8	57.8	54.7	47.6	40.8
	MEDIUM	58.8	57.2	54.1	50.3	44.1	38.6	28.7
	LOW	54.3	53.7	48.6	46.5	41.4	34.2	27.7

ARI AND UL CERTIFICATION DATA - HORIZONTAL FAN COILS

The following units are certified in compliance with the Air Conditioning and Refrigeration Institute (ARI), Industry Standard 440 for room fan coil units.

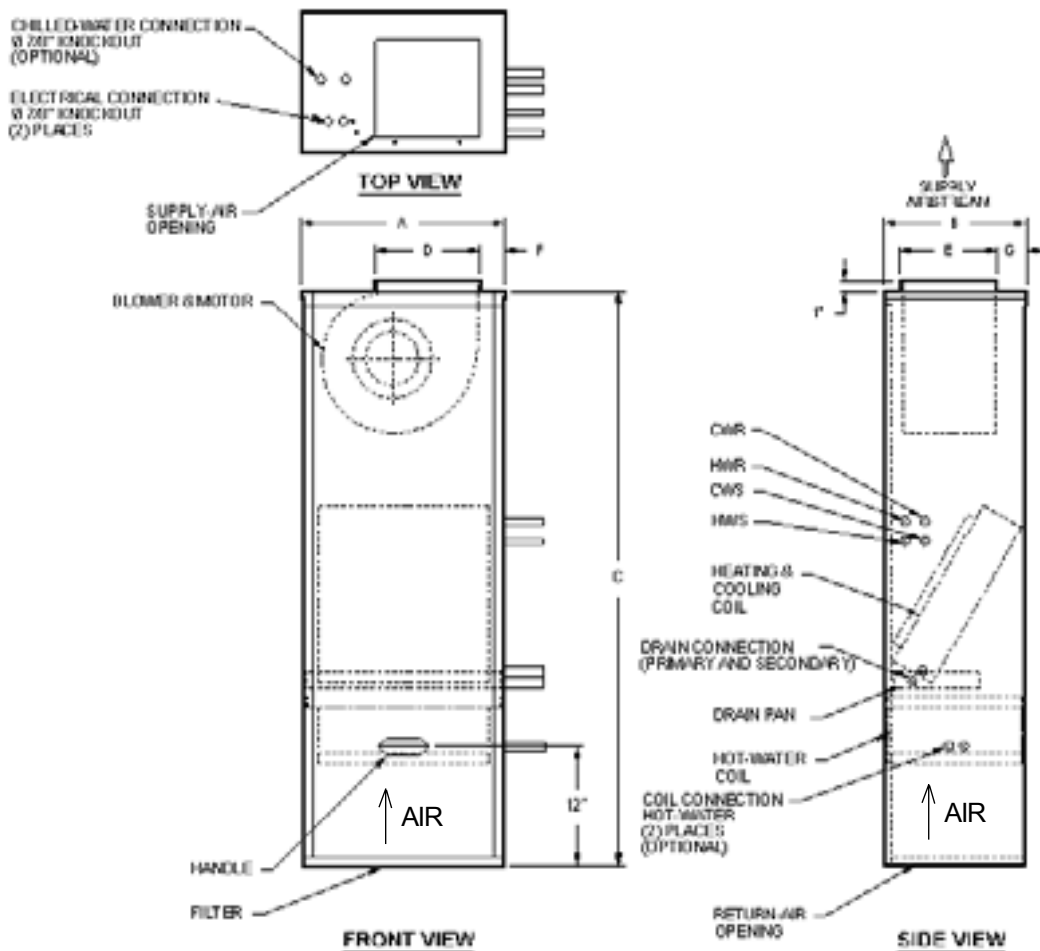
ARI and UL CERTIFICATION DATA							
ARI APPROVED STANDARD RATINGS					COOLING CAPACITY		POWER INPUT WATTS
UNIT TYPE	UNIT SIZE	RATED CFM	GPM	P.D. FT. H ² O	TOTAL COOLING BTUH	SENSIBLE COOLING BTUH	
VERTICAL BASIC & DELUXE	04	510	3.5	1.0	19,000	13,800	175
	06	590	3.8	1.2	21,000	15,000	181
	08	760	4.8	1.8	25,700	19,300	316
	10	900	5.5	2.5	29,800	22,800	356
	12	1,060	6.8	3.6	34,300	26,300	407
VERTICAL FRONT RETURN & FRONT SUPPLY AND RETURN	04	NOT AVAILABLE					
	06	730	3.8	1.0	20,700	16,900	260
	08	960	5.5	2.1	29,400	23,000	360
	10	1,060	6.2	3.0	34,000	26,400	383
	12	1,300	7.4	4.8	43,000	32,800	540

Notes: Based on 80° DB and 67° WB EAT. 45°F EWT. 10°F temperature rise. High fan speed. Motor voltage 115/1/60 power source. Air flow under dry coil conditions. Water pressure drops shown in feet of water. **Data shown for (2) motors.

UL APPROVAL

All USA Coil & Air Coil units are listed by UNDERWRITERS' LABORATORIES, INC. (UL) under the "Re-Examination Service". This listing signifies that USA Coil & Air fan coil units have been examined by UL and found to be in complete compliance with applicable standards. The reexamination service also includes periodic visits by UL inspectors at the USA Coil & Air factory to assure continuing compliance of all listed products. All units are listed under UL Classification Guide No. LZQV.

**VERTICAL BASIC & DELUXE - 400-800 CFM
BOTTOM RETURN / TOP SUPPLY**

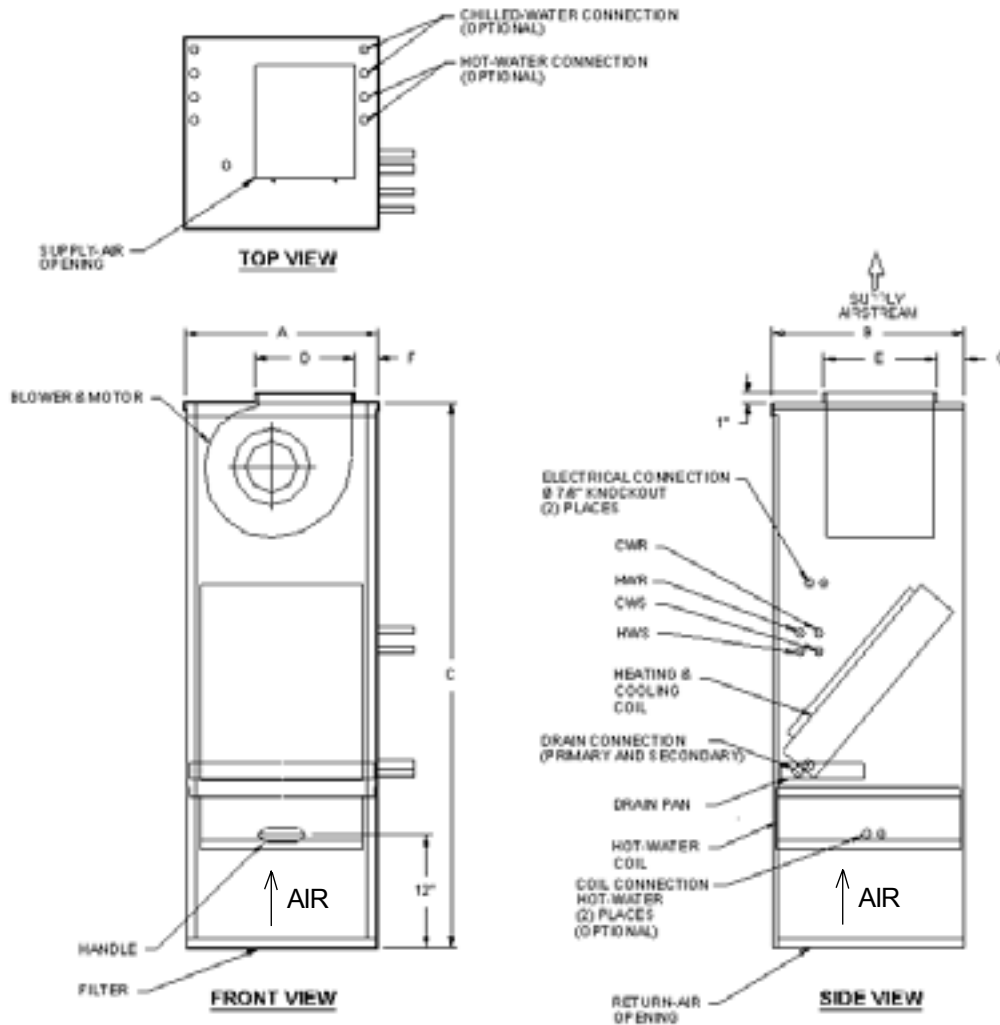


MODEL WVBBT XVBBT WVDBT XVDBT	A	B	C	D	E	F	G	FILTER SIZE
04	20 5/32	14 5/32	57 5/8	10 15/32	7 3/32	2 7/8	3 1/32	16x16x1
06	20 5/32	14 5/32	57 5/8	10 15/32	8 15/32	2 7/8	3 1/32	16x20x1
08	20 5/32	14 5/32	57 5/8	10 15/32	9 13/32	2 7/8	3 1/32	20x20x1

Models WVBBT, XVBBT, WVDBT, & XVDBT-04 thru 08.

- Right-hand unit shown, left-hand unit opposite.
- Coil connections determined by facing the front access panel.
- Electrical junction box is located on the same side as the coil connections.
- Drain pan is powder-coated epoxy with a 1/4" thick closed-cell insulation and has 3/4" NPT (sizes 04-08) primary and secondary drain connections.
- Entire cabinet, scroll and blower wheel are heavy-gauge, galvanized steel.
- Coil connections: 1/2" CW and HW on sizes 04-08.

VERTICAL BASIC & DELUXE - 1000-1200 CFM BOTTOM RETURN / TOPSUPPLY

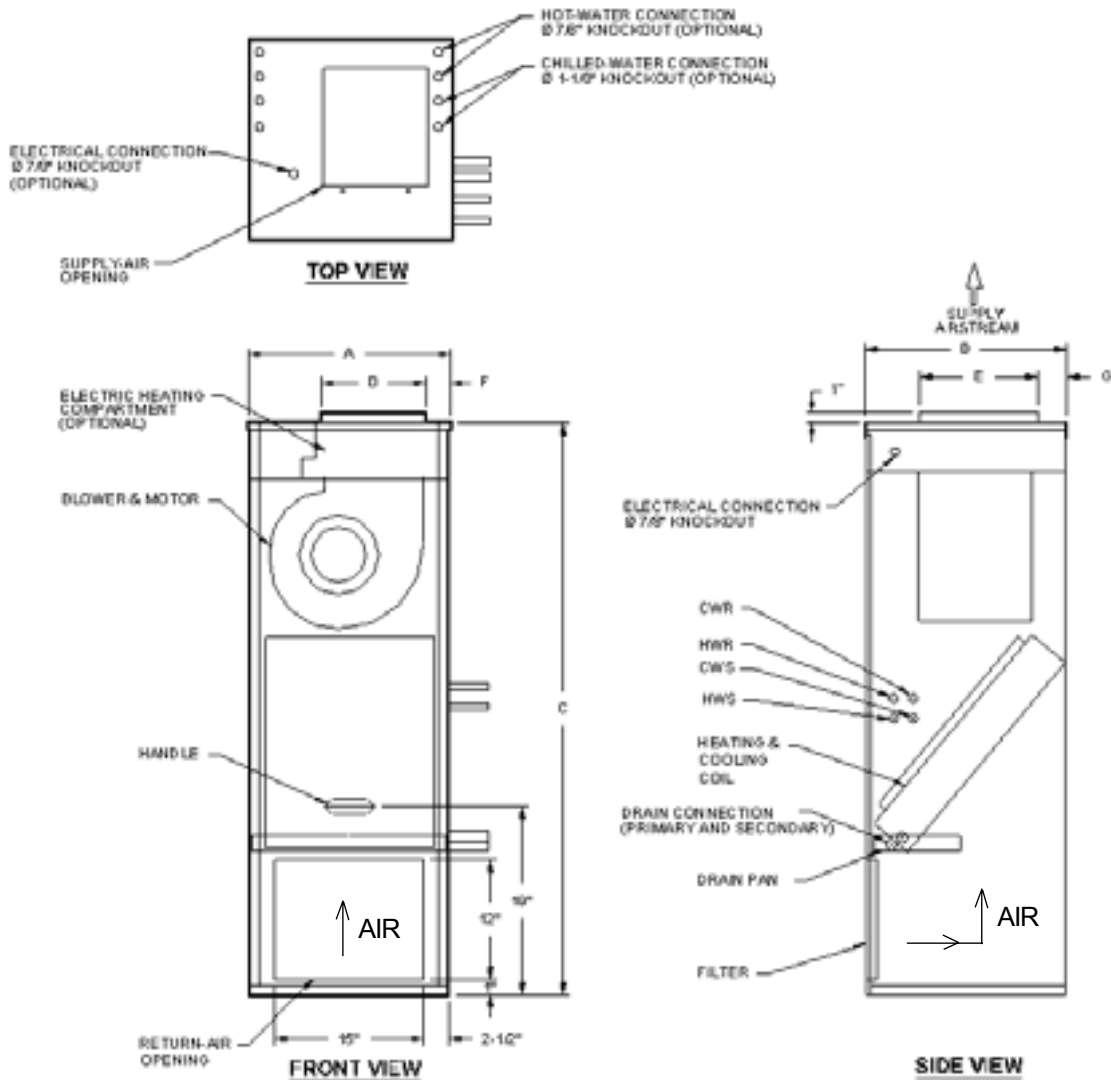


MODEL W VBBT XVBBT W VDBT XVDBT	A	B	C	D	E	F	G	FILTER SIZE
10	20 11/32	20 5/16	57 5/8	10 3/8	11 15/16	2 1/8	3 1/16	20x20x1
12	20 11/32	20 5/16	57 5/8	10 3/8	11 15/16	2 1/8	3 1/16	20x20x1

Models WVBBT, XVBBT, WVDBT, & XVDBT-10 & 12.

- Right-hand unit shown, left-hand unit opposite.
- Coil connections determined by facing the front access panel.
- Electrical junction box is located on the same side as the coil connections.
- Drain pan is powder-coated epoxy with a 1/4" thick closed-cell insulation and has 3/4" NPT (sizes 10 & 12) primary and secondary drain connections.
- Entire cabinet, scroll and blower wheel are heavy-gauge, galvanized steel.
- Coil connections: 1/2" CW on size 10; 3/4" on size 12; 1/2" HW on sizes 10 & 12.

**BASIC VERTICAL - 400 TO 800 CFM
FRONT RETURN / TOP SUPPLY**

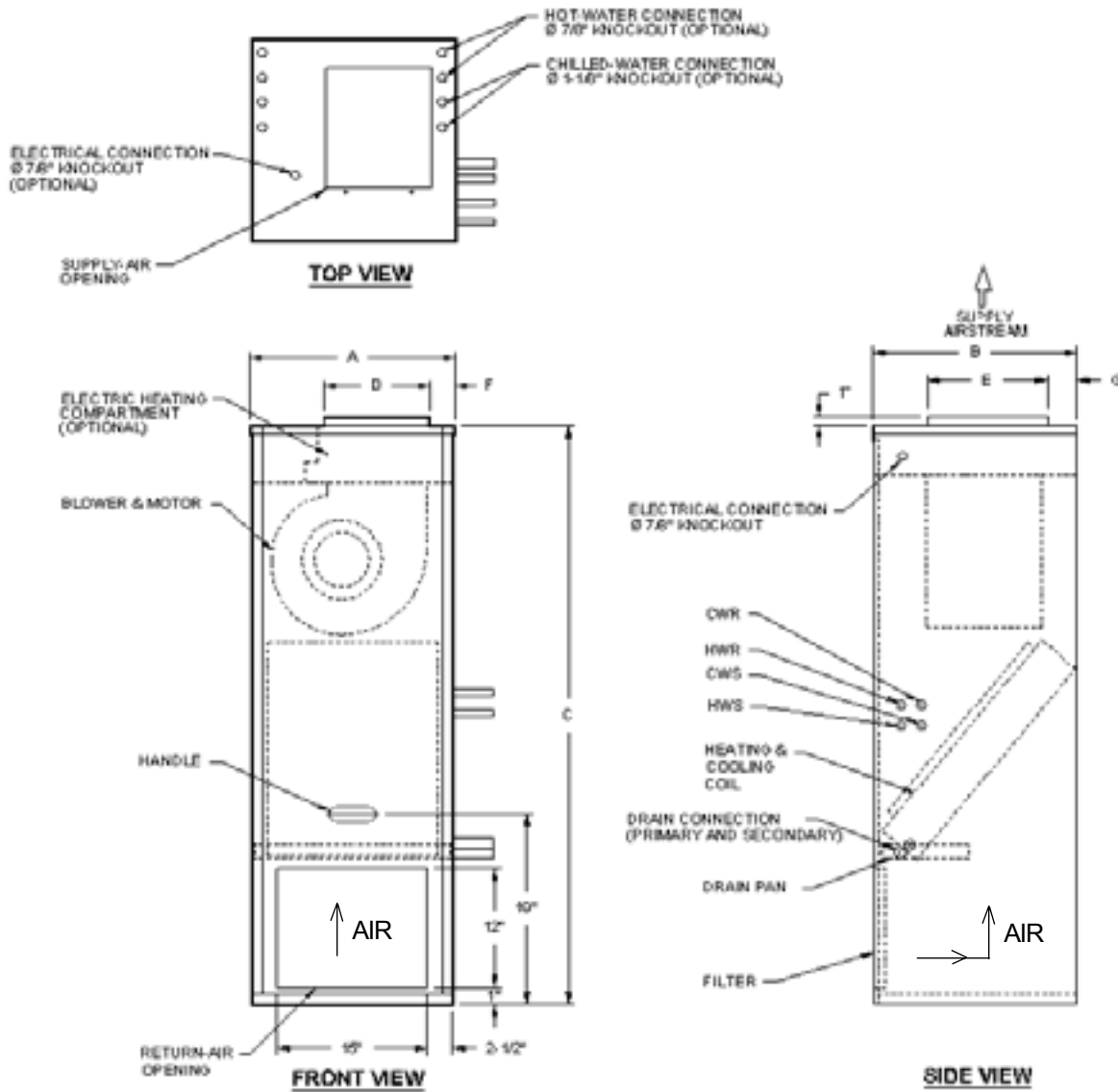


MODEL	A	B	C	D	E	F	G	FILTER SIZE
04	20 5/32	14 5/32	57 5/8	10 15/32	7 3/32	2 7/32	3 1/32	16x16x1
06	20 5/32	14 5/32	57 5/8	10 15/32	8 15/32	2 7/32	3 1/32	16x20x1
08	20 5/32	14 5/32	57 5/8	10 15/32	9 13/32	2 7/32	3 1/32	20x20x1

Cased Vertical with Front Return / Top Supply Models 04 thru 08.

- Right-hand unit shown, left-hand unit opposite.
- Coil connections determined by facing the front access panel.
- Electrical junction box is located on the same side as the coil connections.
- Drain pan is powder-coated epoxy with a 1/4" thick closed-cell insulation and has 3/4" NPT (sizes 04-08) primary and secondary drain connections.
- Entire cabinet, scroll and blower wheel are heavy-gauge, galvanized steel.
- Coil connections: 1/2" CW and HW on sizes 04-08.

BASIC VERTICAL - 1000-1200 CFM FRONT RETURN / TOP SUPPLY



MODEL	A	B	C	D	E	F	G	FILTER SIZE
10	20 11/32	20 5/16	57 5/8	10 3/8	11 15/16	2 1/8	3 1/16	20x20x1
12	20 11/32	20 5/16	57 5/8	10 3/8	11 15/16	2 1/8	3 1/16	20x20x1

Cased Vertical with Front Return / Top Supply Models 10 & 12.

- Right-hand unit shown, left-hand unit opposite.
- Coil connections determined by facing the front access panel.
- Electrical junction box is located on the same side as the coil connections.
- Drain pan is powder-coated epoxy with a 1/4" thick closed-cell insulation and has 3/4" NPT (sizes 10 & 12) primary and secondary drain connections.
- Entire cabinet, scroll and blower wheel are heavy-gauge, galvanized steel.
- Coil connections: 1/2" CW on size 10; 3/4" on size 12; 1/2" HW on sizes 10 & 12.

HORIZONTAL UNITS

UNIT MEASURES and WEIGHTS - BASIC MODE - BDHW & BDHX								
MODEL	DIMENSIONS - INCHES				DIMENSIONS - MILLIMETERS			
	HEIGHT	WIDTH	DEPTH	POUNDS	HEIGHT	WIDTH	DEPTH	KILOGRAMS
03	10	32	22	75	254	813	559	35
04	10	32	22	90	254	813	559	41
06	10	38	22	117	254	965	559	54
08	11	38	23	130	279	965	584	60
10	11	50	23	150	279	1270	584	69
12	11	50	23	160	279	1270	584	73
UNIT MEASURES and WEIGHTS - DELUXE MODEL - DDHW & DDHX								
03	11	43	24	165	280	1092	610	75
04	11	43	24	175	280	1092	610	80
06	13	53	28	180	330	1346	711	82
08	13	53	28	190	330	1346	711	87
10	13	61	28	210	330	1549	711	96
12	13	61	28	220	330	1549	711	100
UNIT MEASURES and WEIGHTS - RETURN-AIR PLENUM MODEL RDHW & RDHX								
03	11	32	26	95	279	813	661	43
04	11	32	26	120	279	813	661	55
06	13	38	26	137	279	965	661	63
08	13	38	27	150	330	965	686	68
10	13	50	27	170	330	1270	686	77
12	13	50	27	180	330	1270	686	82

VERTICAL UNITS

MODEL BDVW-B, BDVX-B, DDVW-B & DDVX-B								
UNIT SIZE	DIMENSIONS - INCHES				DIMENSIONS - MILLIMETERS			
	HEIGHT	WIDTH	DEPTH	POUNDS	HEIGHT	WIDTH	DEPTH	KILOGRAMS
04	59	21	15	109	1499	534	381	49
06	59	21	15	115	1499	534	381	52
08	59	21	15	147	1499	534	381	67
10	59	21	15	156	1499	534	381	71
12	59	21	15	172	1499	534	381	78
MODEL BDVW-R & BDVX-R								
04	43	21	20	121	1092	533	508	55
06	43	21	20	121	1092	533	508	55
08	43	25	20	136	1092	635	508	62
10	46	25	20	146	1168	635	508	67
12	46	30	20	157	1168	762	508	72
MODEL BDVW-F & BDVX-F								
04	43	21	20	121	1092	533	508	55
06	43	21	20	121	1092	533	508	55
08	43	25	20	136	1092	635	508	62
10	46	25	20	146	1168	635	508	67
12	46	30	20	157	1168	762	508	72



HVAC and Industrial Coils

Fast shipment on all types of HVAC Coils to include: steam, hot water, chilled water, DX, and condenser replacement for any existing coil available in 5 or 10 work days.



Stock Cooling and Heating Coils

Immediate shipment of Chilled Water and DX Cooling Coils for Vertical or Horizontal Airflow. Also available are 1 row and 2 row Flanged Hot Water/Steam Coils from 6 x 12 to 30 x 60.



Chillers and Water Cooled Condensers

Immediate shipment of chillers (7½ to 150 ton) and Water Cooled Condensers (5 to 150 ton). Replacements and special configurations and construction available.

USA Coil & Air. **An outstanding product line *plus*, service, availability and quality.**

Replacement Tube Bundles and Heat Exchangers

5 and 10 working day shipments available for most U-tube and Straight-tube bundles constructed of copper, Cupronickel, carbon steel, brass and stainless steel also available.



Central Station Air Handling Units

Fast shipment on a complete line of Horizontal and Vertical Units. Cooling up to 38,000 CFM and heating up to 60,000 CFM. Options include forward curved or airfoil fans, variable inlet vanes, special coils, filter sections and mixing box also are available.



Represented by:



Belt Drive Fan-Coil Units

Immediate shipment available on nominal 2 ton to 20 ton Horizontal or Vertical Units for either Chilled Water or Refrigerant Cooling. Options include hot water or steam heating, mixing box and discharge grills.